

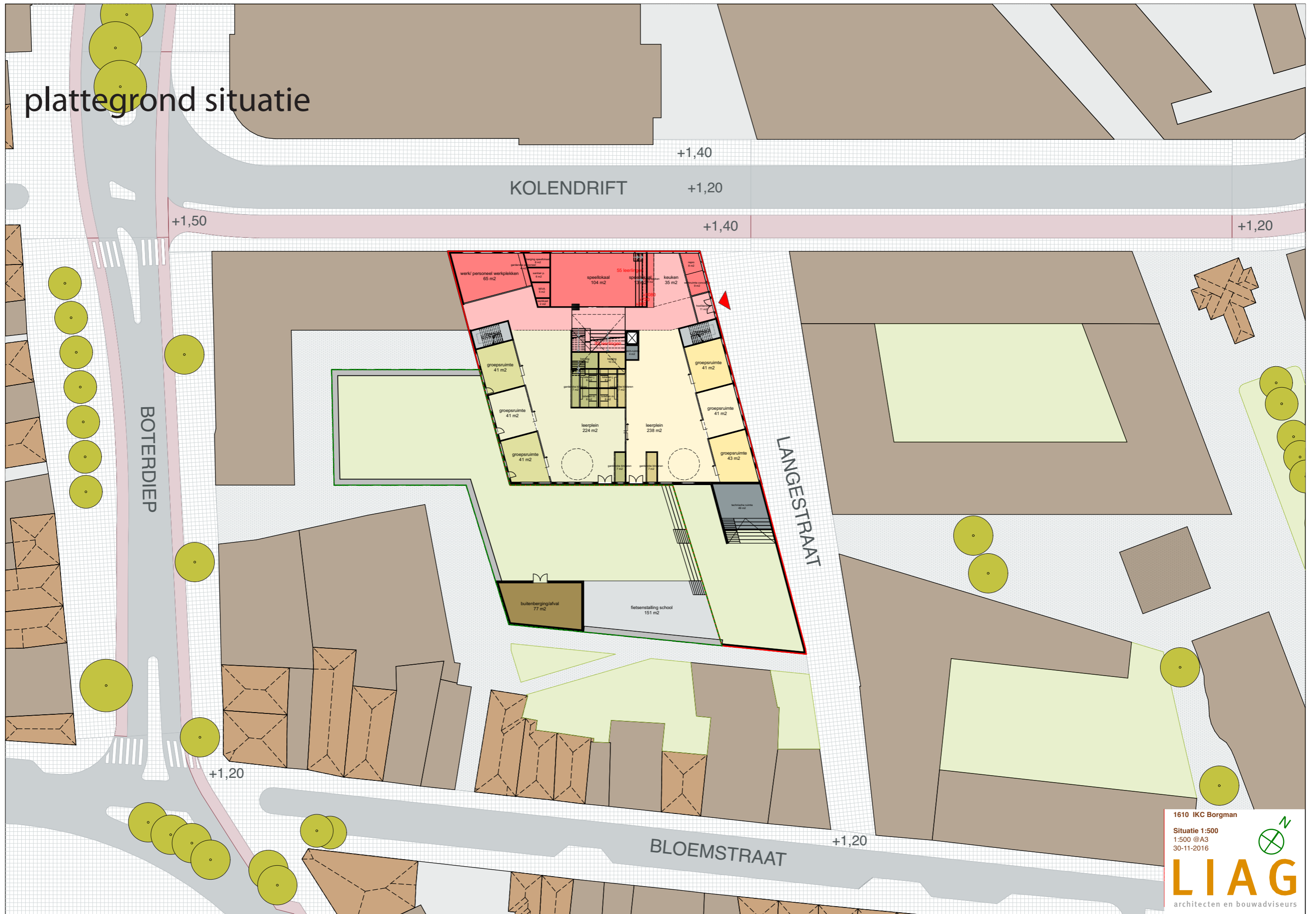
30.11.16



stand van zaken-voorlopigontwerp

OT v.07 | IKC Borgman | Groningen

# plattegrond situatie



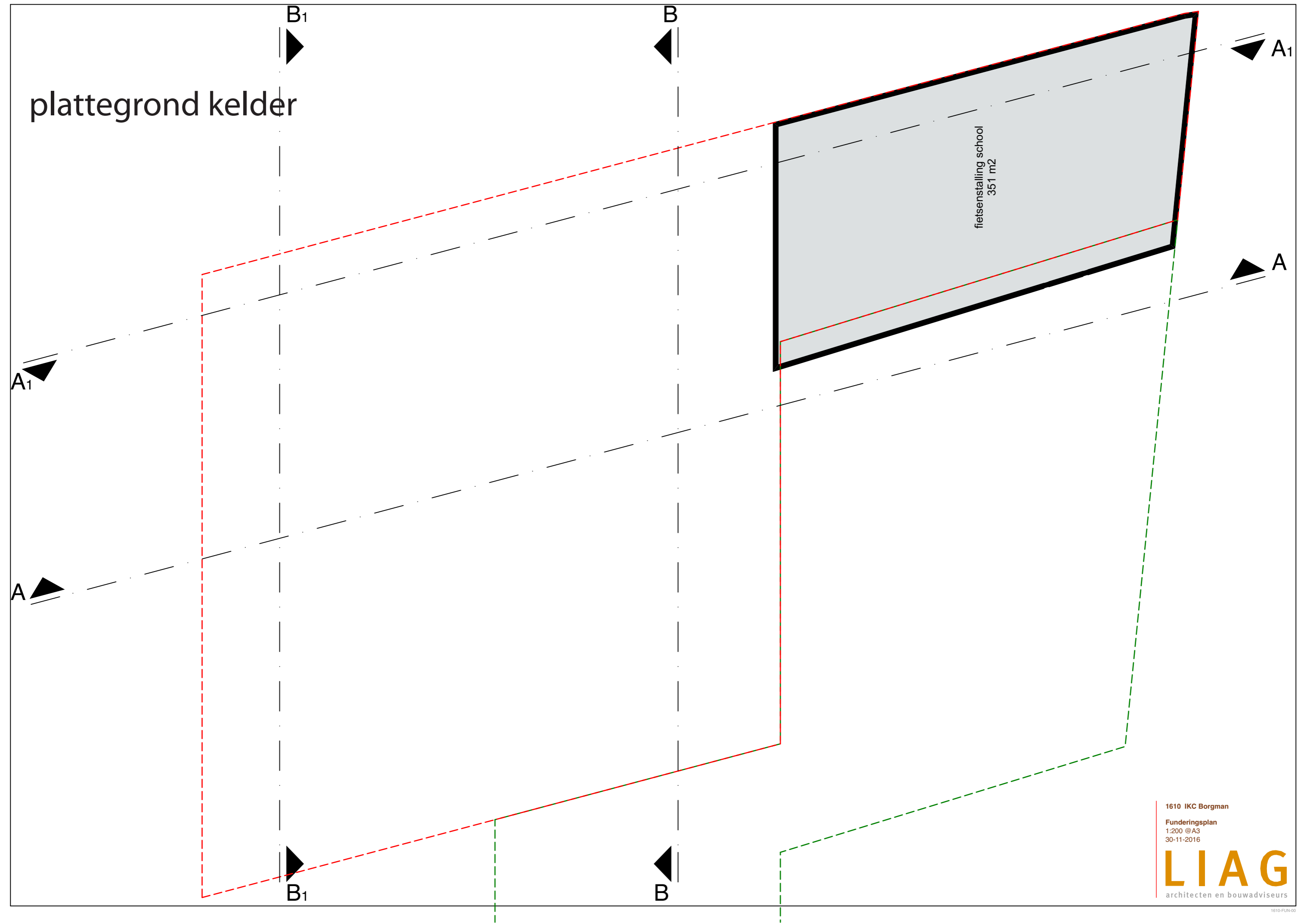
1610 IKC Borgman

Situatie 1:500  
1:500 @A3  
30-11-2016



**LIAG**  
architecten en bouwadviseurs

plattegrond kelder

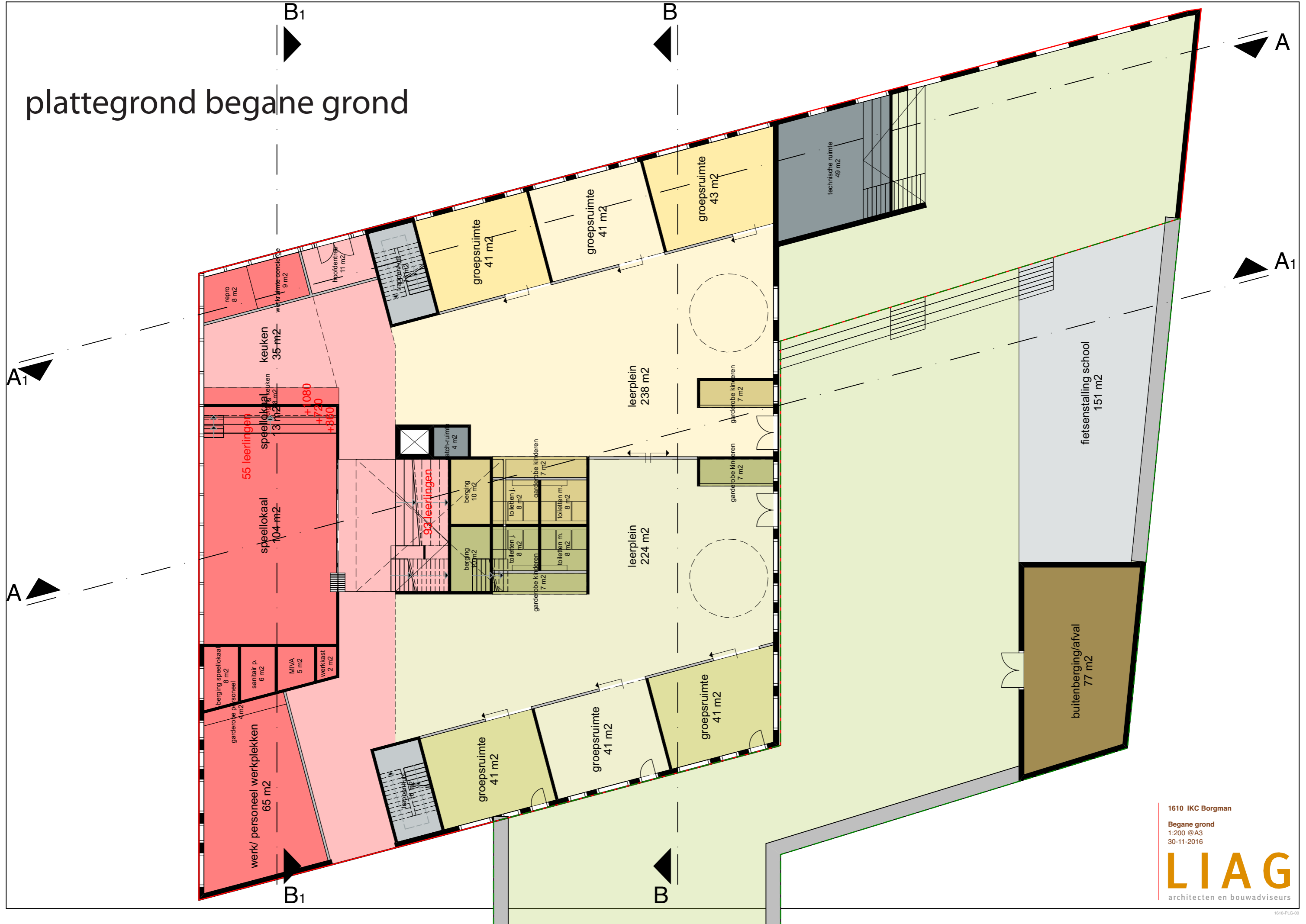


1610 IKC Borgman

Funderingsplan  
1:200 @A3  
30-11-2016

**LIAG**  
architecten en bouwadviseurs

# plattegrond begane grond



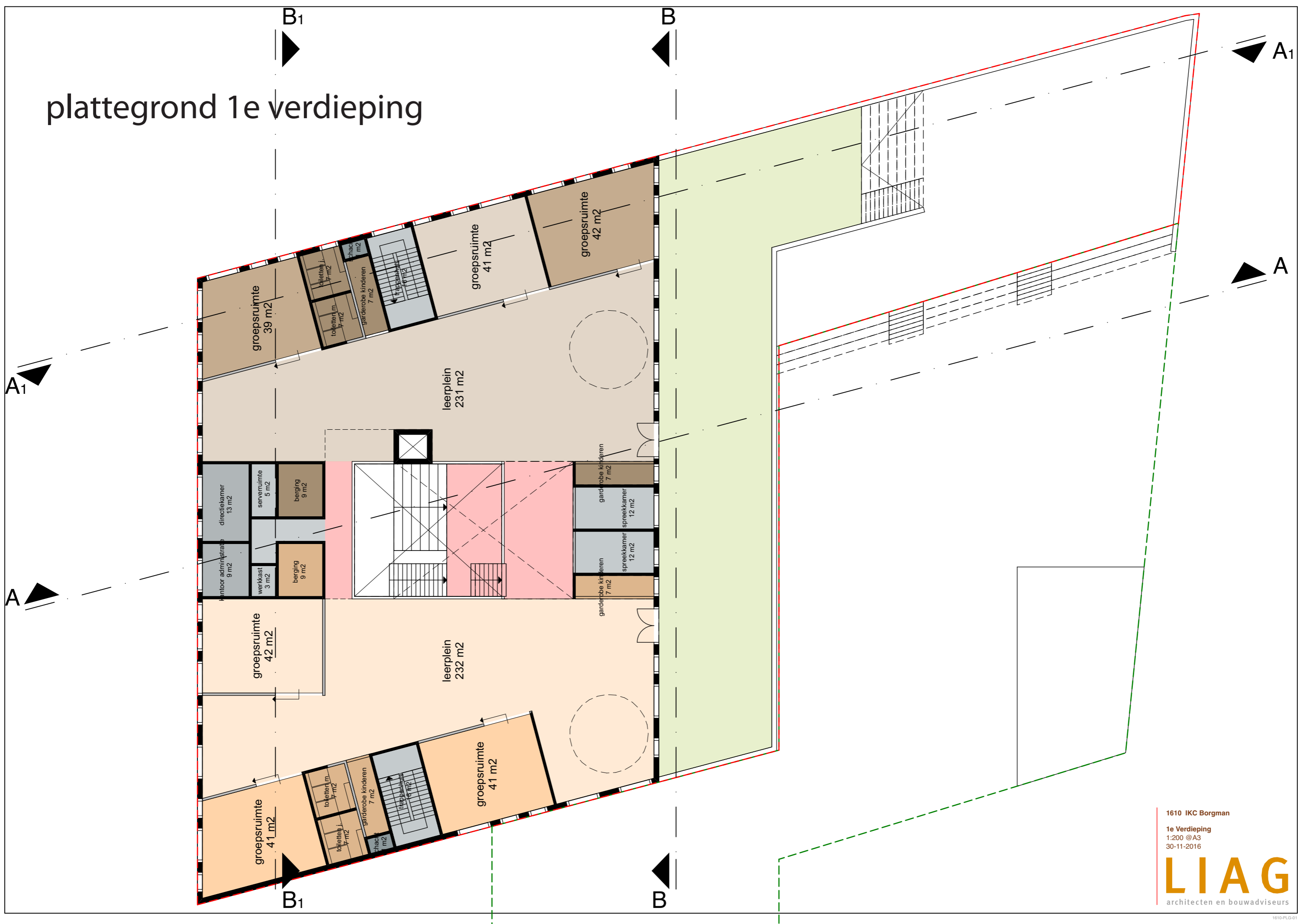
1610 IKC Borgman

Begane grond  
1:200 @A3  
30-11-2016

**LIAG**  
architecten en bouwadviseurs

1610-PLG-00

# plattegrond 1e verdieping

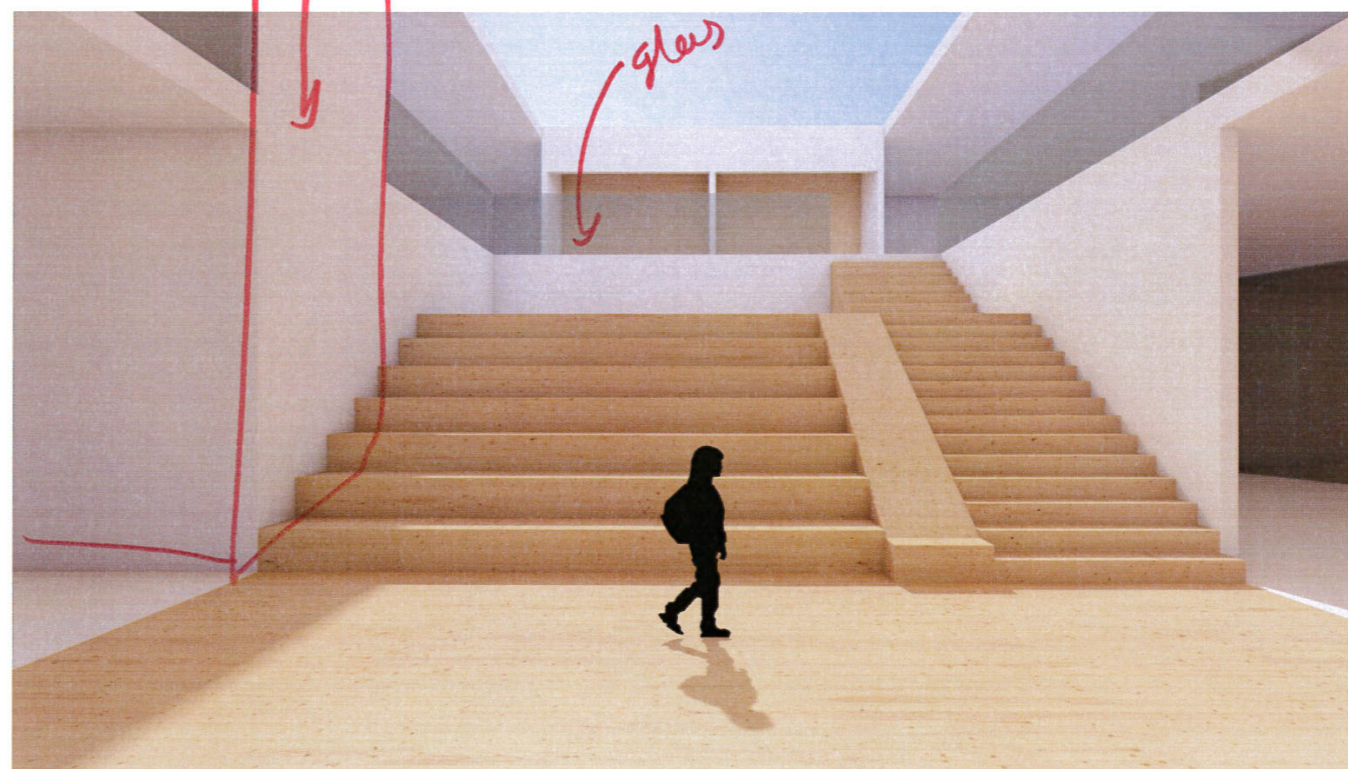
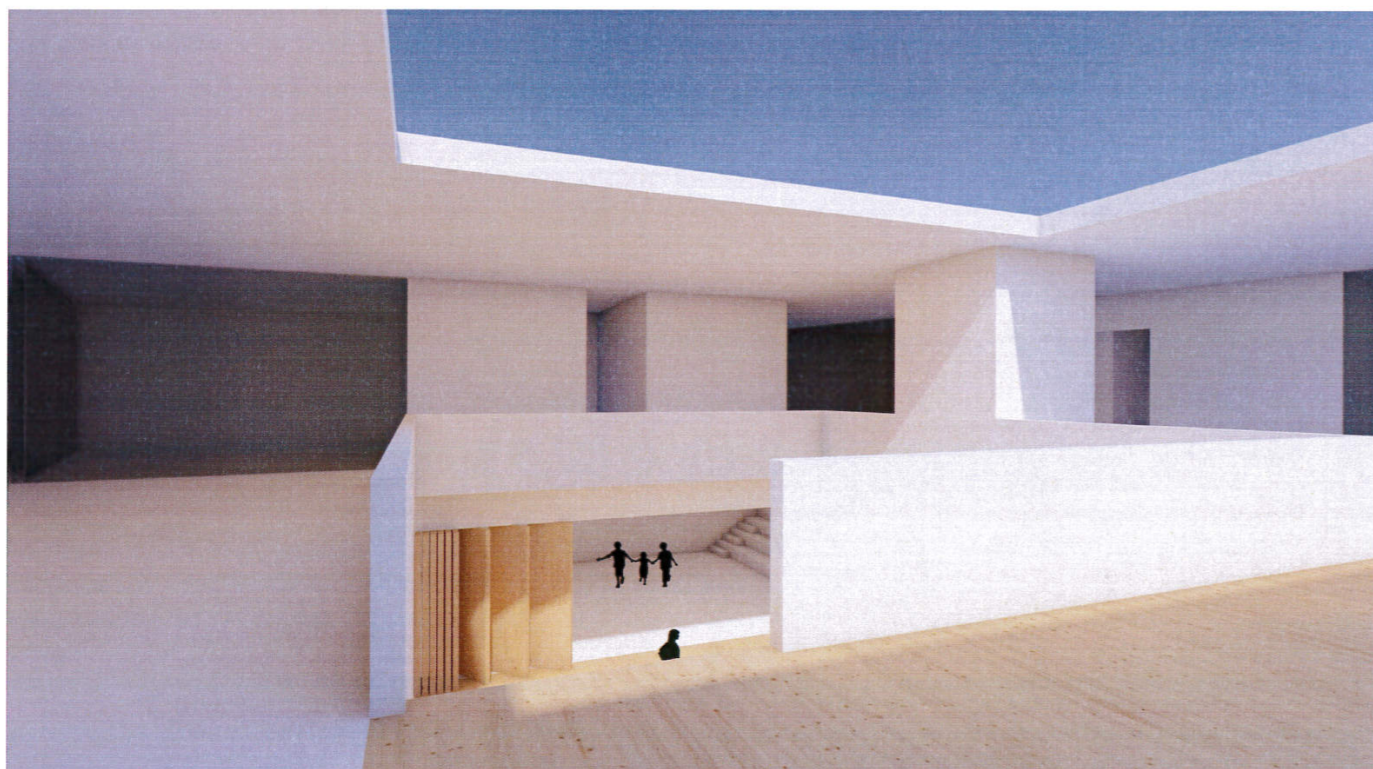
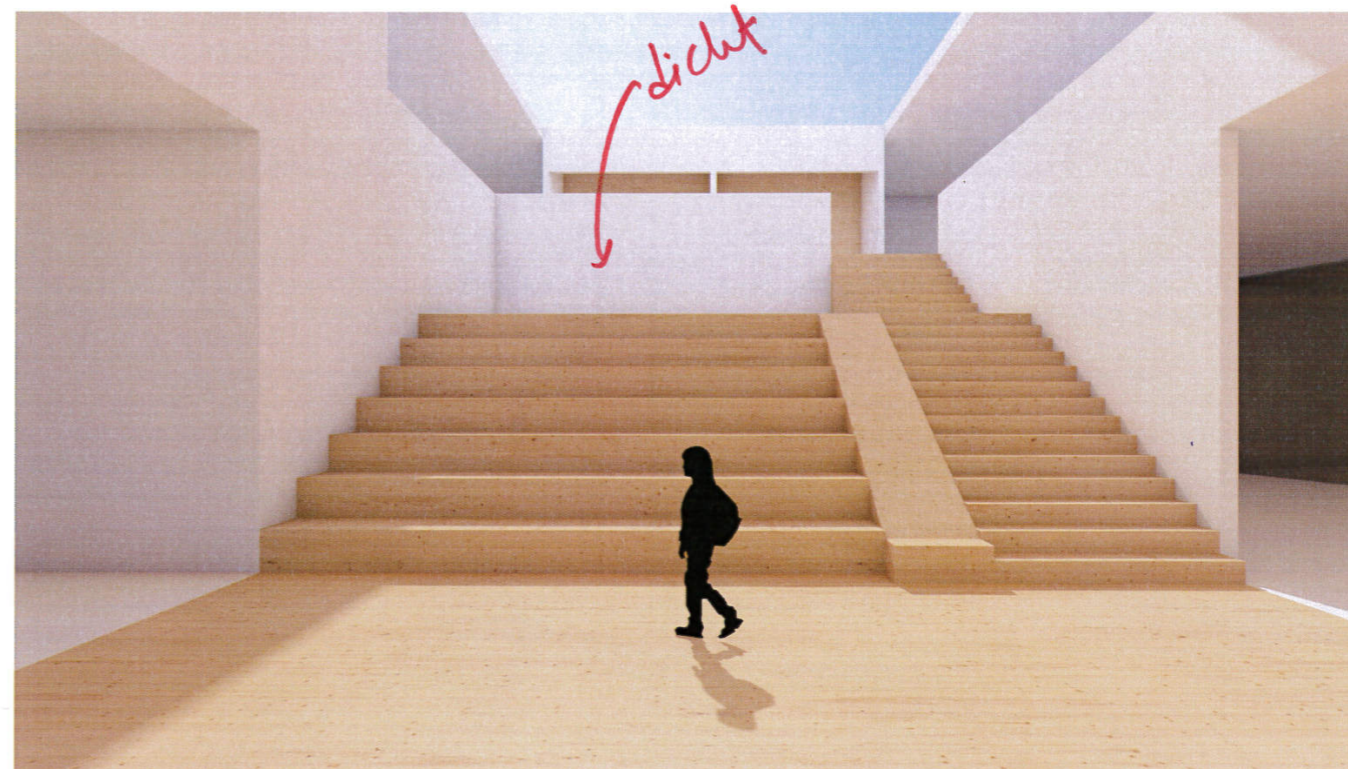
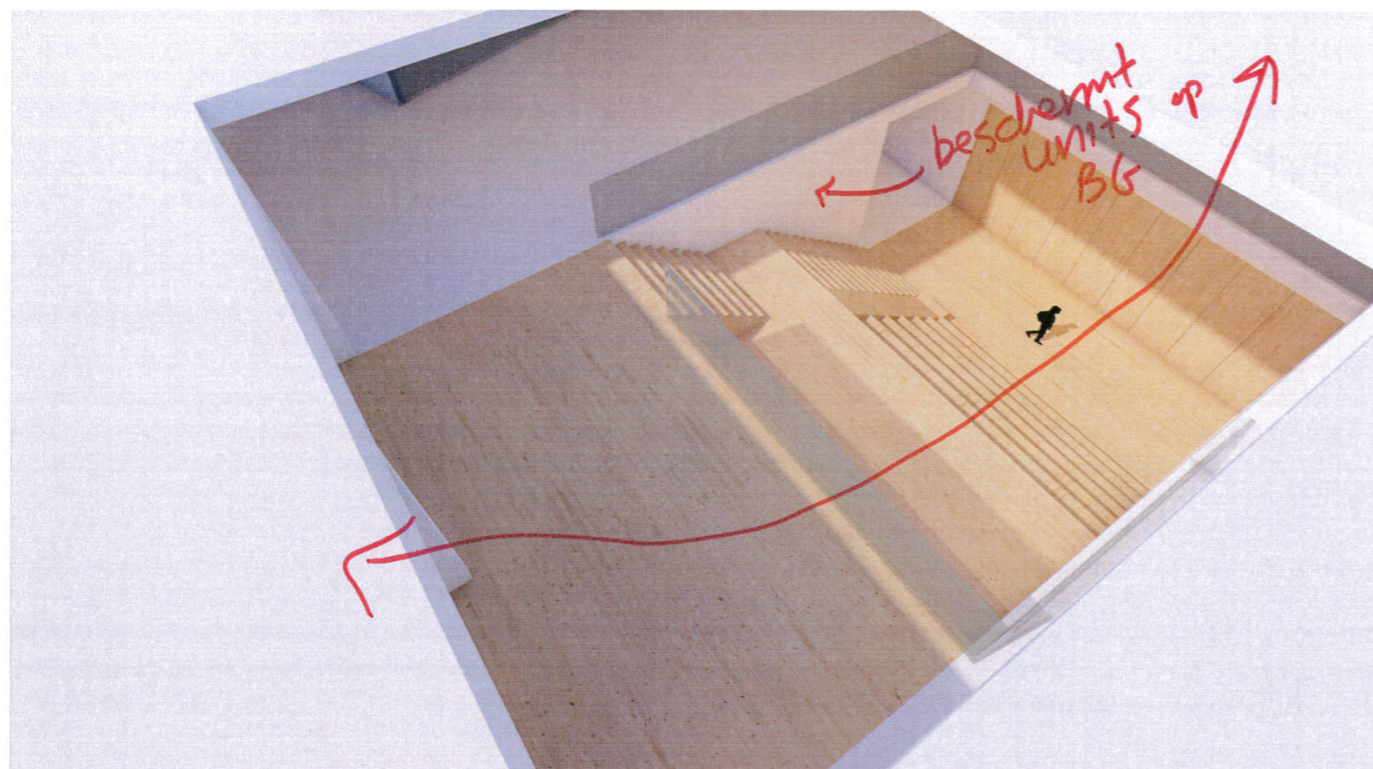


1610 IKC Borgman

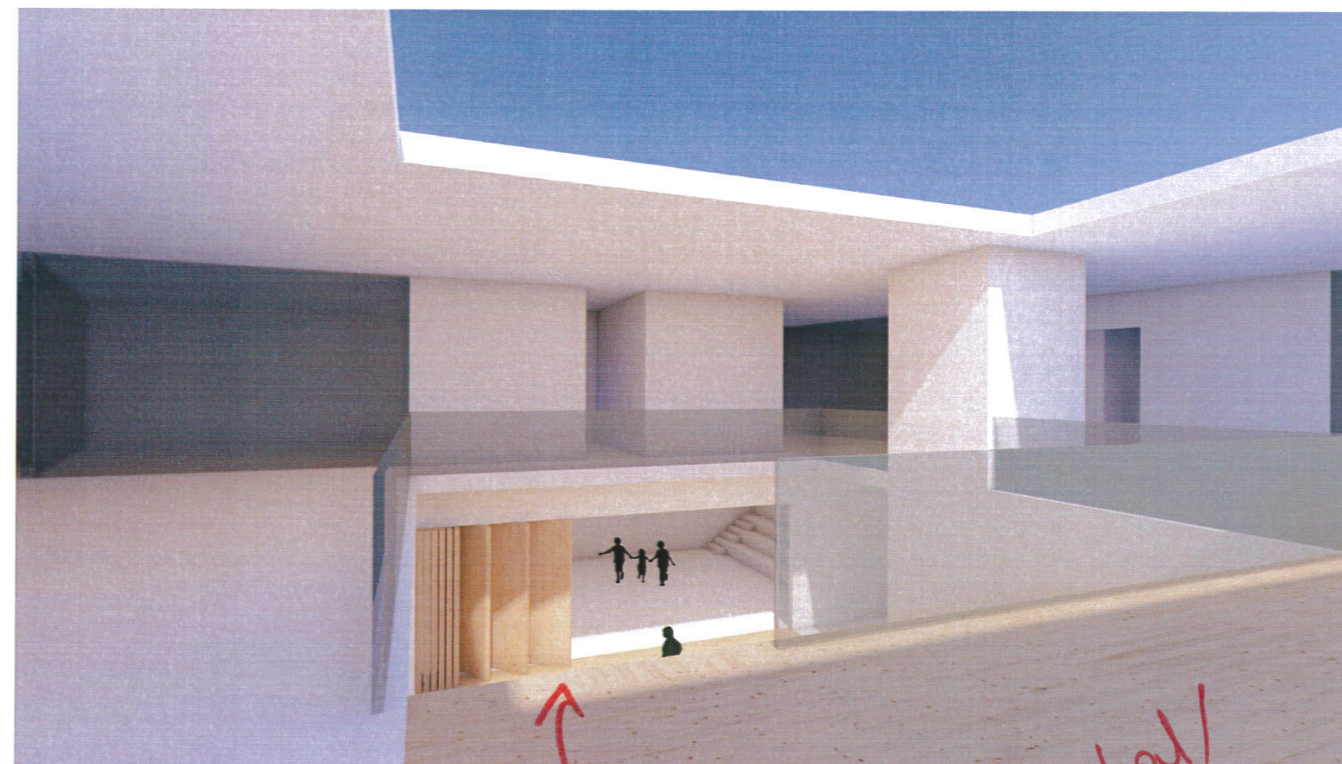
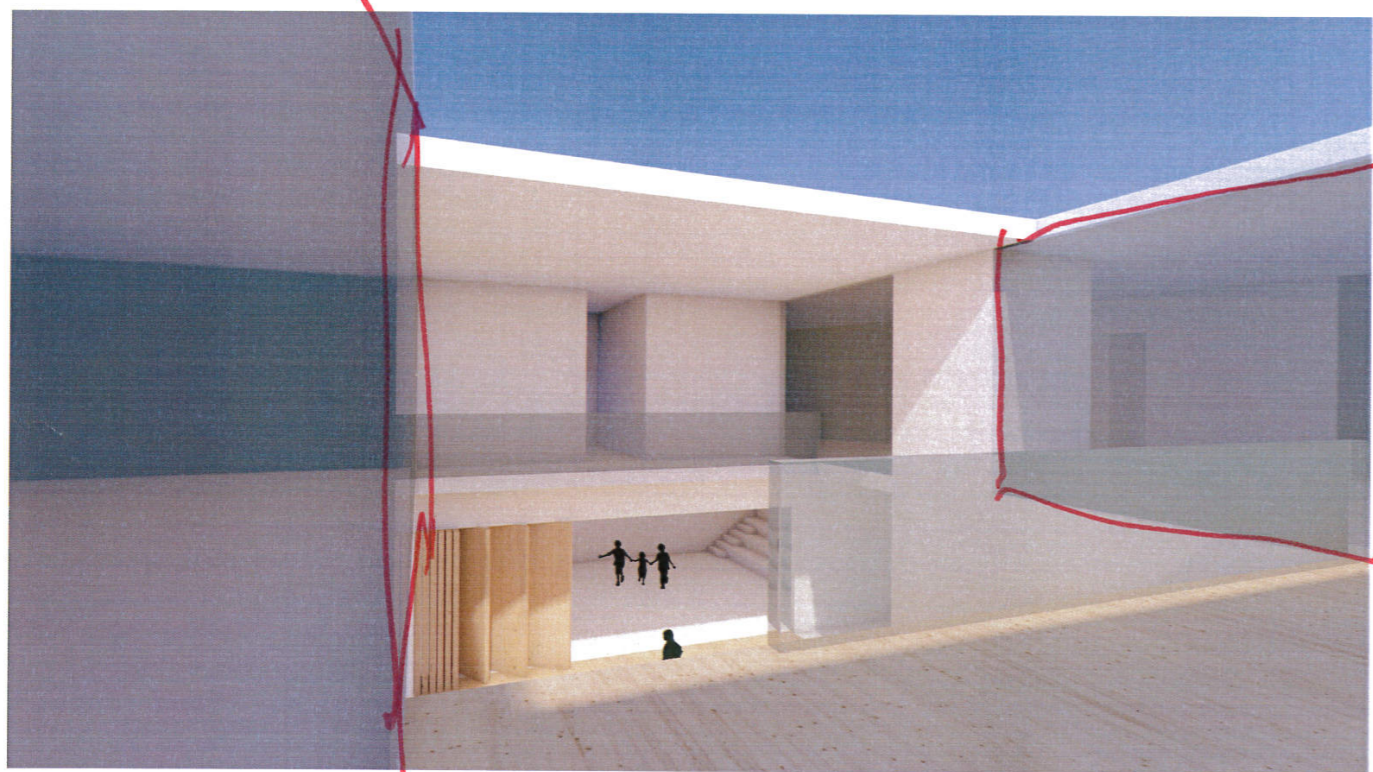
1e Verdieping  
1:200 @A3  
30-11-2016

**LIAG**  
architecten en bouwadviseurs

# studies centrale hal



# studies centrale hal



units op verdieping afgesloten kunnen worden?

of open naar centrale hal / tribune trap



# IKC de Toverberg

## Begane grond

Plattegrond inrichting  
1:200

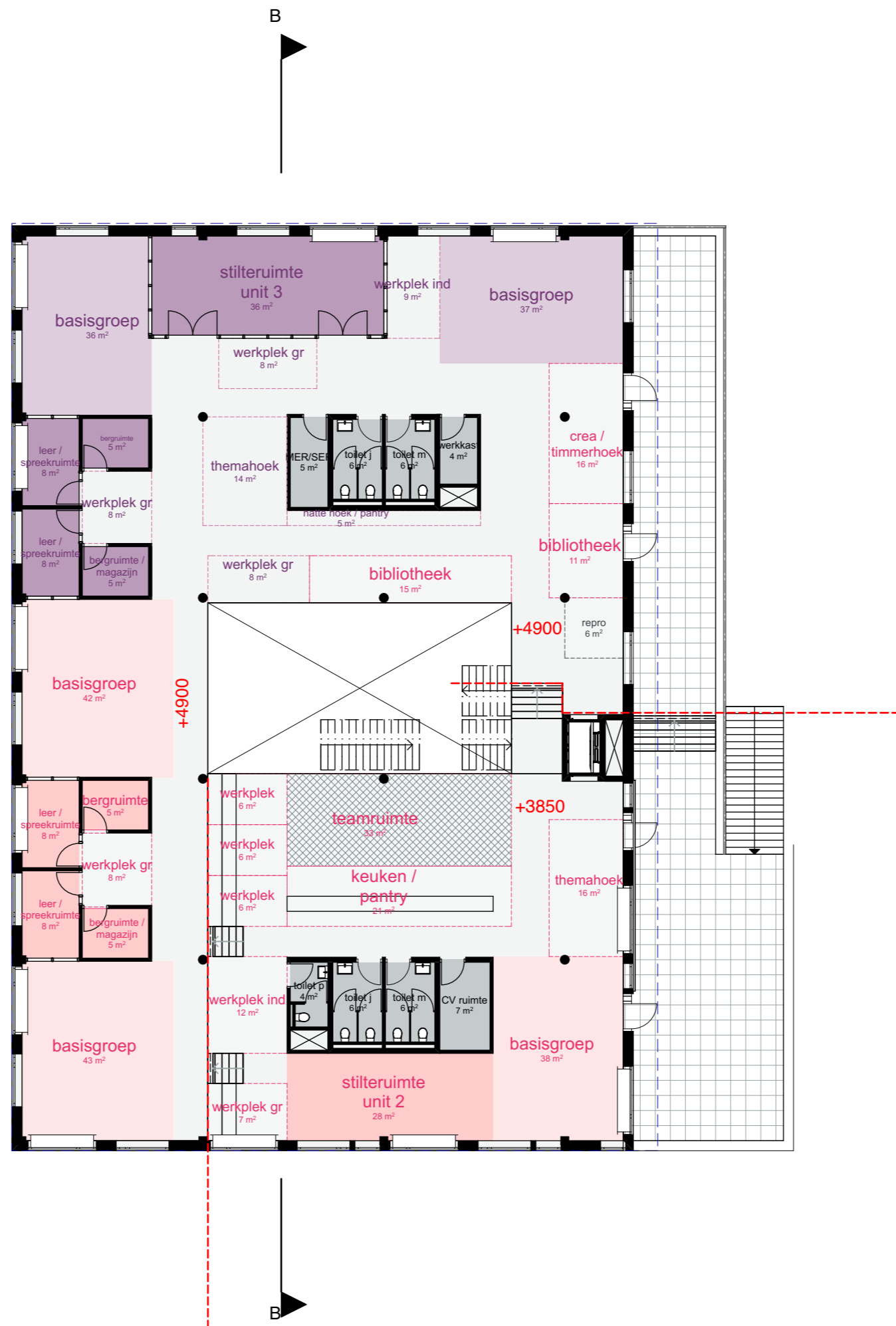




# IKC de Toverberg

## 1e verdieping

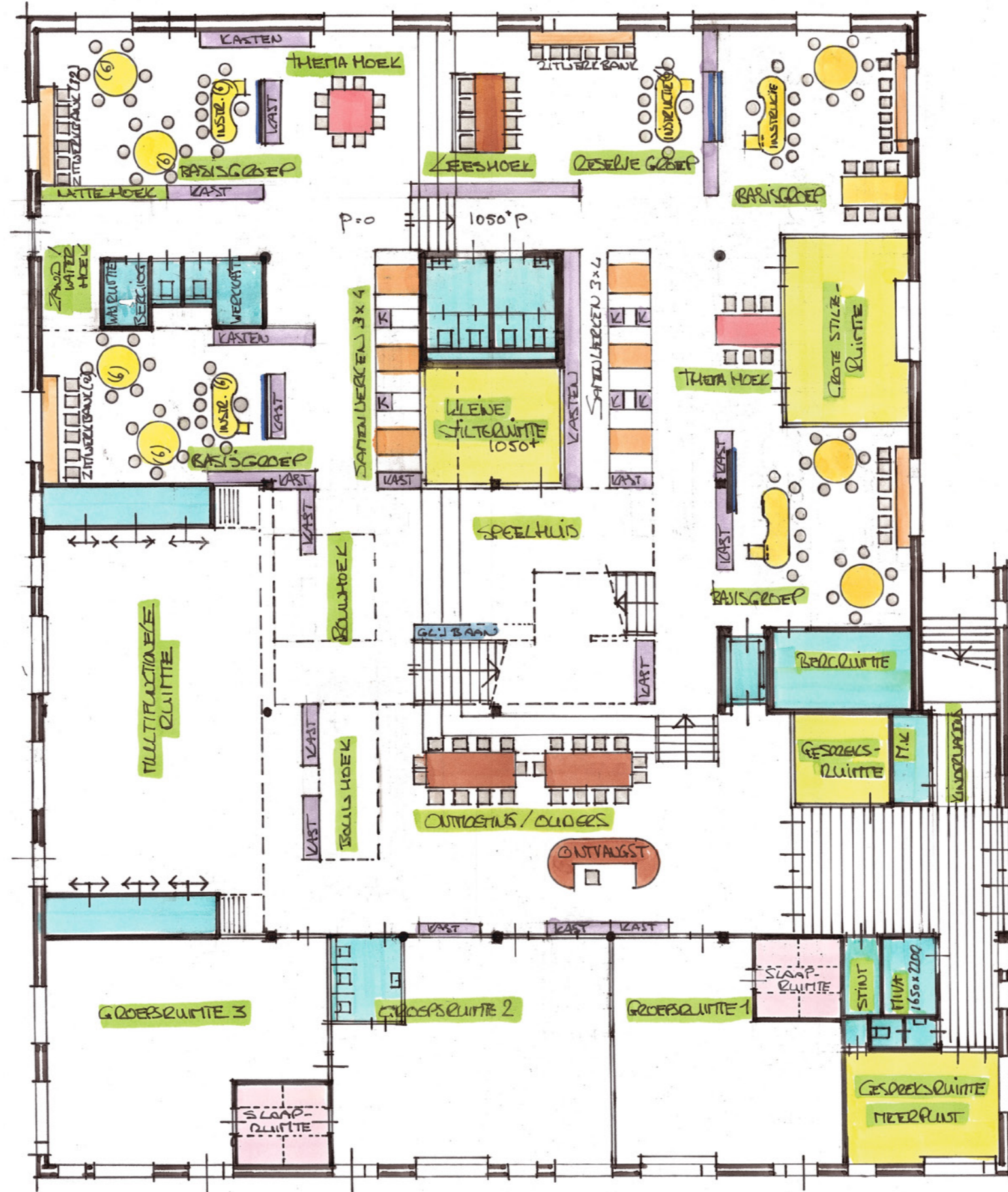
Plattegrond inrichting  
1:200



# IKC de Toverberg

## Begane grond

Overzicht activiteiten  
1:150

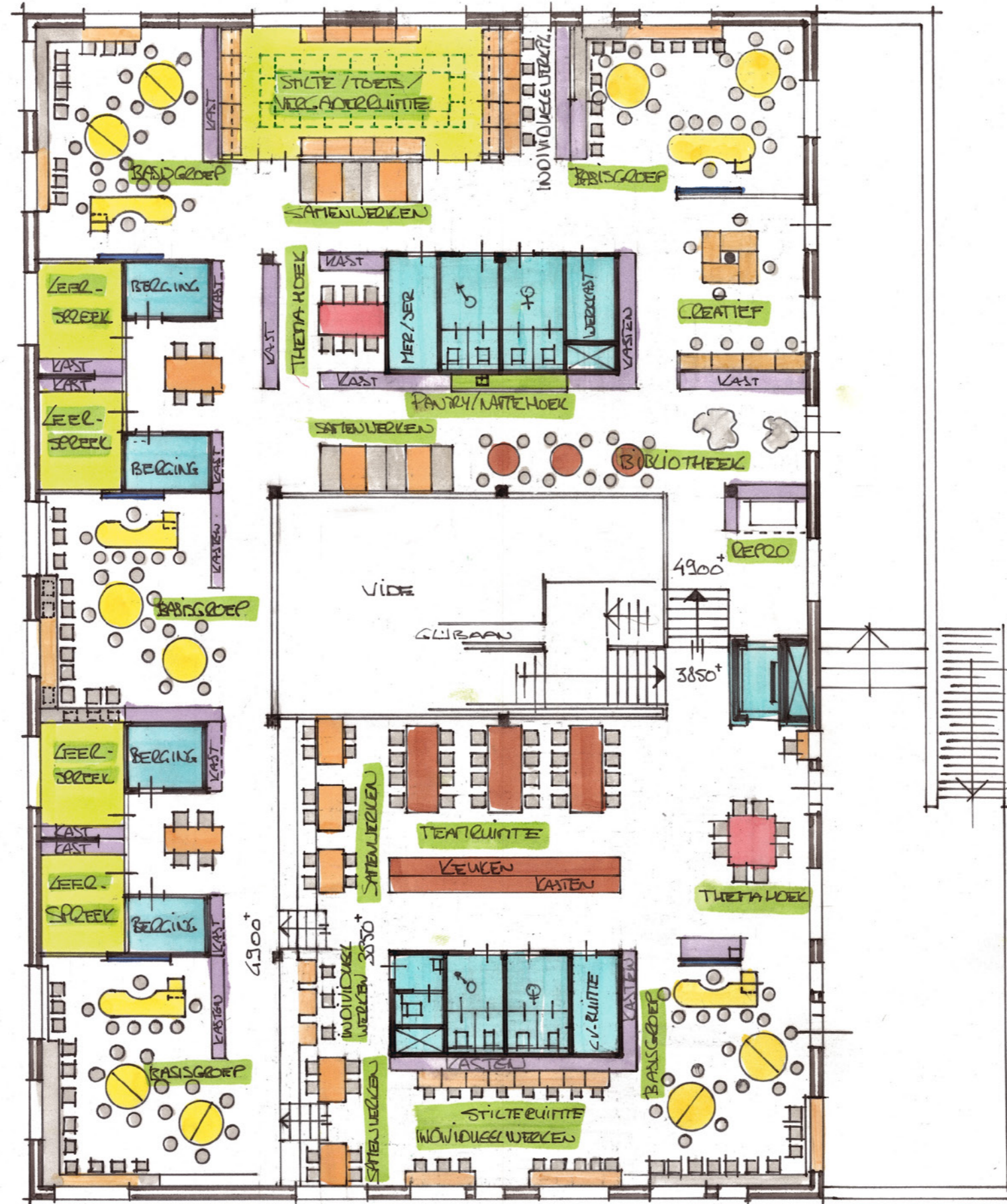


DE TOVERBERG  
 ACTIVITEITEN OVERZICHT  
 BEGANE GROND PEIL=0/1050+  
 DSDR - de Scholendokter  
 24 Februari 2016  
 0 1 2 3 4 5 6 7 8 9 M

# IKC de Toverberg

## 1e verdieping

Overzicht activiteiten  
1:150



DE TOVERBERG  
ACTIVITATEN OVERZICHT  
EERSTE VERDIEPING 3850/4900  
BOSDR - de Scholendeker  
24 februari 2016  
0 1 2 3 4 5 6 7 8 9 m

Laterna Magica

